

BALEAP PIM - 30th June 2023

AI-assisted academic writing - who's the author now?

How are HEIs, EAP / ESP teachers, and high-stakes assessment course designers responding to the latest advances in AI tools available to our students?

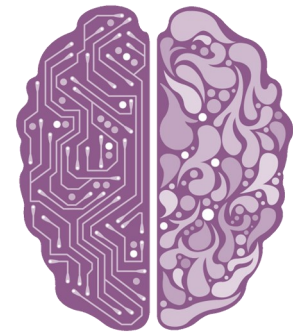
What do advances in AI tools relevant to HE students mean for the role of English language competence, digital literacy in academia, and authorship in HE? How are HEI policies adapting, and how are/should we be teaching and assessing our students?

Mike Sharples, Emeritus Professor at the Institute of Educational Technology, Open University, will be delivering a plenary talk.

We would now like to invite you, in this Call for Papers, to submit proposals for in-person and video contributions of your own to our PIM. See below for more details and how to submit.

We particularly welcome contributions addressing any of the following:

- Limitations and/or affordances of particular AI tools in the HE context (specific contexts: EAP programmes, discipline specific degree programmes, particular degree level etc.)
- Particular variables affecting student attitudes and integration with AI tools (e.g. digital literacy, academic confidence, linguistic confidence, degree level, cultural background etc.)
- Bringing AI into the classroom: when, how, for who, and why.
- HE assessment: mitigation and adaption.
- Assessing language skills and meeting UKVI 4-skills assessment.
- The future of plagiarism policies, procedures and panels.
- The writing process: should it be protected as a skill, for who and why?



We welcome proposals to fit the following formats:

1. *20 minute presentation followed by Q&A*
2. *30 minute or 60 minute workshop*
3. *Symposium (60 minute of interrelated talks incl. Q&A)*
4. *5-10 minute Lightning video to be hosted on publicly available BALEAP YouTube channel + asynchronous Q&A*

**Proposals should be maximum 250 words
(excluding references).**

The submission deadline is noon, Friday 28 April 2023.

**To submit proposals, please follow [this link](#)
or scan the QR code to the left**

Any questions can be directed to baleap.pim@durham.ac.uk

