

Speculation, innovation and embodied thinking in Art & Design

Siân Lund & Sarah Blair



Royal College of Art
Postgraduate Art & Design



**UNIVERSITY OF
PLYMOUTH**

BALEAP 2025

Speculation, innovation and embodied thinking...

...enhance co-creation?

- Agency
- Experiential
- Contribution



Royal College of Art

Postgraduate Art & Design

Practice-based research: speculation, innovation and embodied

- Characteristics:
- Diversity of methodologies (emergent)
 - Subjectivity and the experiential
 - Senses, non-expert, more than human

What new knowledge/understandings did the studio enquiry and methodology generate that may not have been revealed through other research approaches? Barrett 2010

Speculation

- provocation
- fictional
- simplified
- spaces of/for debate
- suspension of disbelief
- exploratory

...requires viewers to suspend their disbelief and allow their imaginations to wander, to momentarily forget how things are now, and wonder about how things could be. (Dunne & Raby 2013)



Royal College of Art
Postgraduate Art & Design



Gem Barton: Super Futures platform, RCA

Innovation

- taking unfamiliar paths
- destabilising expectations
- clarifying personal traits and patterns
- generating hybrids, intersections, and crossovers



Royal College of Art

Postgraduate Art & Design

Innovation

STATES OF MATTER STATES OF MIND

Jewellery and Metal
Autumn Project

Context

As artists and designers, we challenge perceptions of reality and seek to shine new light on assumptions and tired, given narratives. Although our experiences are subjective and personal, it is important that we continually reflect on and seek new understandings of what surrounds us. As we alter and change material so we must seek to change our own perceptions. To find a fluidity between the States of Mind and the States of Matter.



Royal College of Art

Postgraduate Art & Design

Innovation

Brief

How do you perceive the fluidity of material and the fluidity of reality? Perceptions change with the incoming influx of information as well as new associations made and explored. Our sense of reality is a multi-sensory reaction including touch, sight, smell, hearing and taste yet these senses offer nothing objective and our perception of reality is based on an anthropocentric viewpoint. Metals and gases are fluid in states of reality beyond the majority of human perception; metal molten into liquid unable to touch or smell, gas solidified at subhuman temperatures unable to taste/digest.

In this project you are tasked with finding and working with materials beyond their perceived state and purpose. You are to experiment with and research materials uncommon to you and find ways in which they can be altered, changing your perception of the material at the same time. Senses can be tricked, censored or impeded to register new material, materials can be changed, melted, morphed and altered to elucidate new understanding.



Royal College of Art

Postgraduate Art & Design

Embodied - expanding

Concept of investigation & knowledge:

- sensory
- subjective
- emergent
- multiple
- non-expert
- ambiguous



Royal College of Art

Postgraduate Art & Design

Embodied - expanding

The act of thinking design acknowledges the body as knowledge provider: acknowledges the dependence of human cognition 'upon its interaction with its environment' and that the thinking process depends on 'accumulated embodied knowledge'

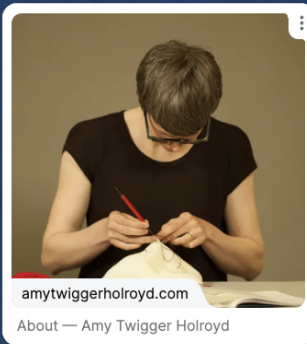


Grad 2016

Royal College of Art

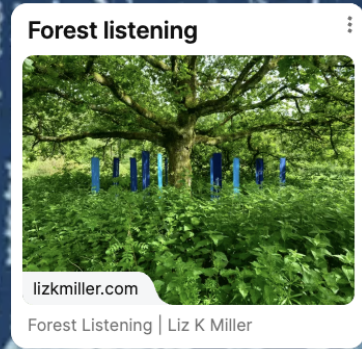
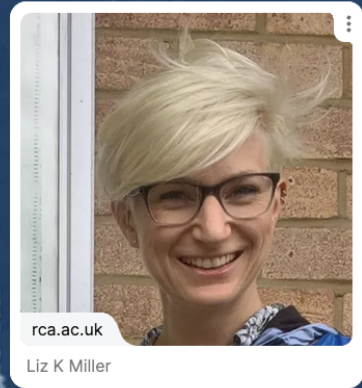
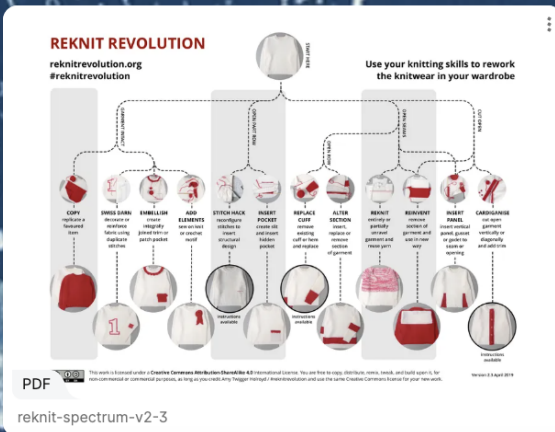
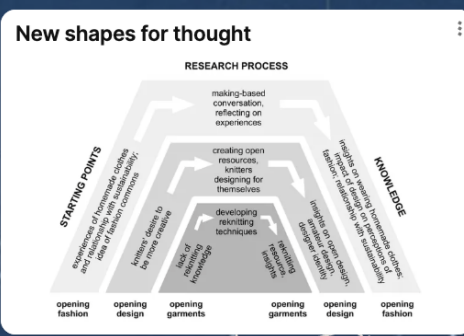
Postgraduate Art & Design

Embodied



amytwiggerholroyd.com

About — Amy Twigger Holroyd



From stitch to society: a multi-level and participatory approach to design research

Introduction

The aim of this paper is to describe a pluridisciplinary research project that investigated the theme of openness in fashion and to discuss a distinctive, practice-based approach to design research that emerged through the process. This approach sees the generative processes of designing and making in collaboration with participants, to investigate research questions at multiple levels, that require open-ended techniques to reach broader social issues.

The project in question explored the potential for opening and closing existing knitted fabrics while simultaneously investigating the role of research objects in challenging the conventional fashion system. It also considered opportunities for service-led design to engage in creative design. A series of working activities supported the exploration of these areas of interest, with insights relating to such an emerging research practice. In this paper these methods are presented as integral components to the research through Design 2016 conference that discussed this research, adding commentary to the present.

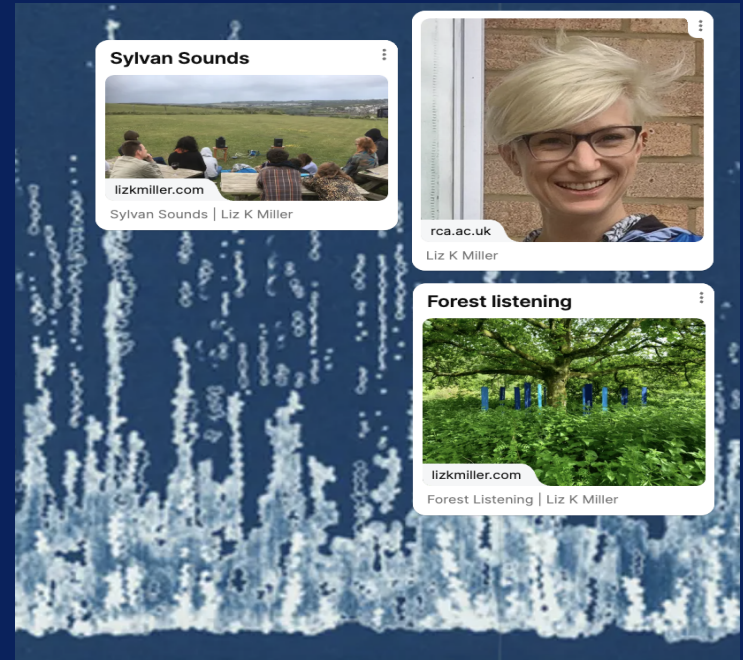
PDF

PubSub8334_Twigger-Holroyd

Amy Twigger Holroyd, From stitch to society: a multi-level and participatory approach to design research, Design Issues 33(3), 11-24

Embodied

Within my forest listening practice I gather up Toop's closeness to the extra-human, Haraway's steadfast commitment to the complexities of the earth, and Lipari's witnessing of the difficult and the strange. I combine these theories by shining an audio spotlight on sylvan sounds, thereby celebrating them as special, of audio value and worthy of attention and listening focus.



We can say, in other words, that the product of the autopoietic system is its own self-organisation.” If autopoiesis is self-generating and self-sustaining, then sympoeisis is generating and sustaining in cooperation with other living beings, the same inter-species cooperation that Morton calls for. *Haraway describes sympoeisis as making-with and becoming-with each other, in response-ability, stating that it is “a word proper to complex, dynamic, responsive, situated, historical systems.*

Teaching that enables this?

Dialogic → reflective synthesis

Articulation → clarity → new connections

Collaborative & exploratory



Royal College of Art

Postgraduate Art & Design

Research: how practice and research interweave and cross-fertilise to build unexpected syntheses and fresh perspectives:

- interacting variables
- dialogue and negotiation
- unlearning as much as learning

Such built-

in stickiness can be a deliberate strategy to develop and extend students' learning potential as stickiness in the curriculum offers the possibility of



Royal College of Art

Postgraduate Art & Design

responses, presenting thought-provoking challenges.

...unexpected syntheses and fresh perspectives:

Bennett's ethical aims also align with my own listening intentions, calling for: “new procedures, technologies, and regimes of perception that enable us to consult nonhumans more closely, or to listen and respond more carefully to their outbreaks, objections, testimonies, and propositions.” She asserts that it is necessary to rewrite the “grammar that assigns activity to people and passivity to things” and that via the ethical aim of redistributing value to vibrant matter, it “will not solve the problem of human exploitation or oppression, but it can inspire a greater sense of the extent to which all bodies are kin in the sense of inextricably enmeshed in a dense network of relations.”



entangled

unsettling

levelling

liberating

agency

fluid



Royal College of Art

Postgraduate Art & Design

validated