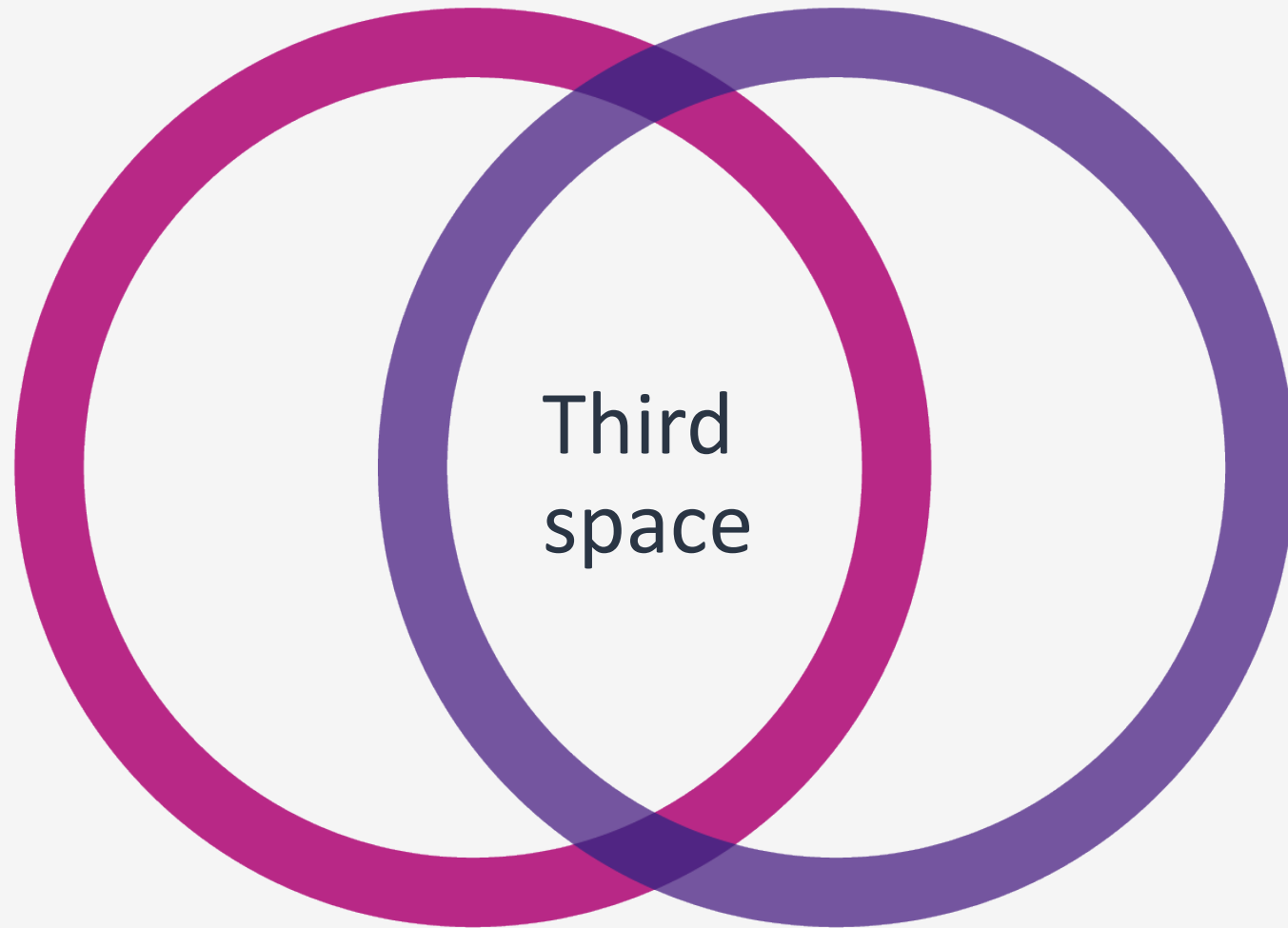


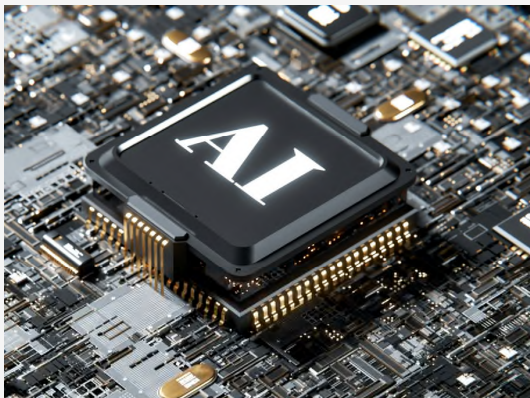
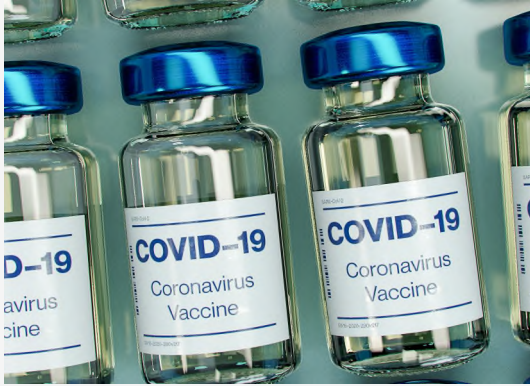


How we learned to stop worrying and thrive in the third space

Julie King, Andrew Northern & Robin Mowat



Disruptive forces



Team alignment



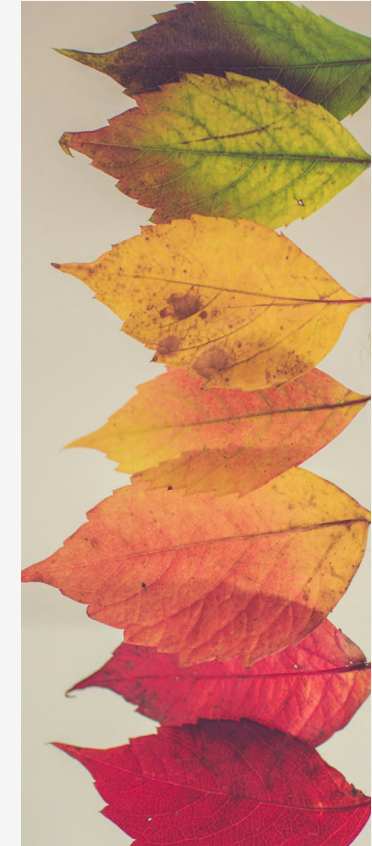
Invisibility



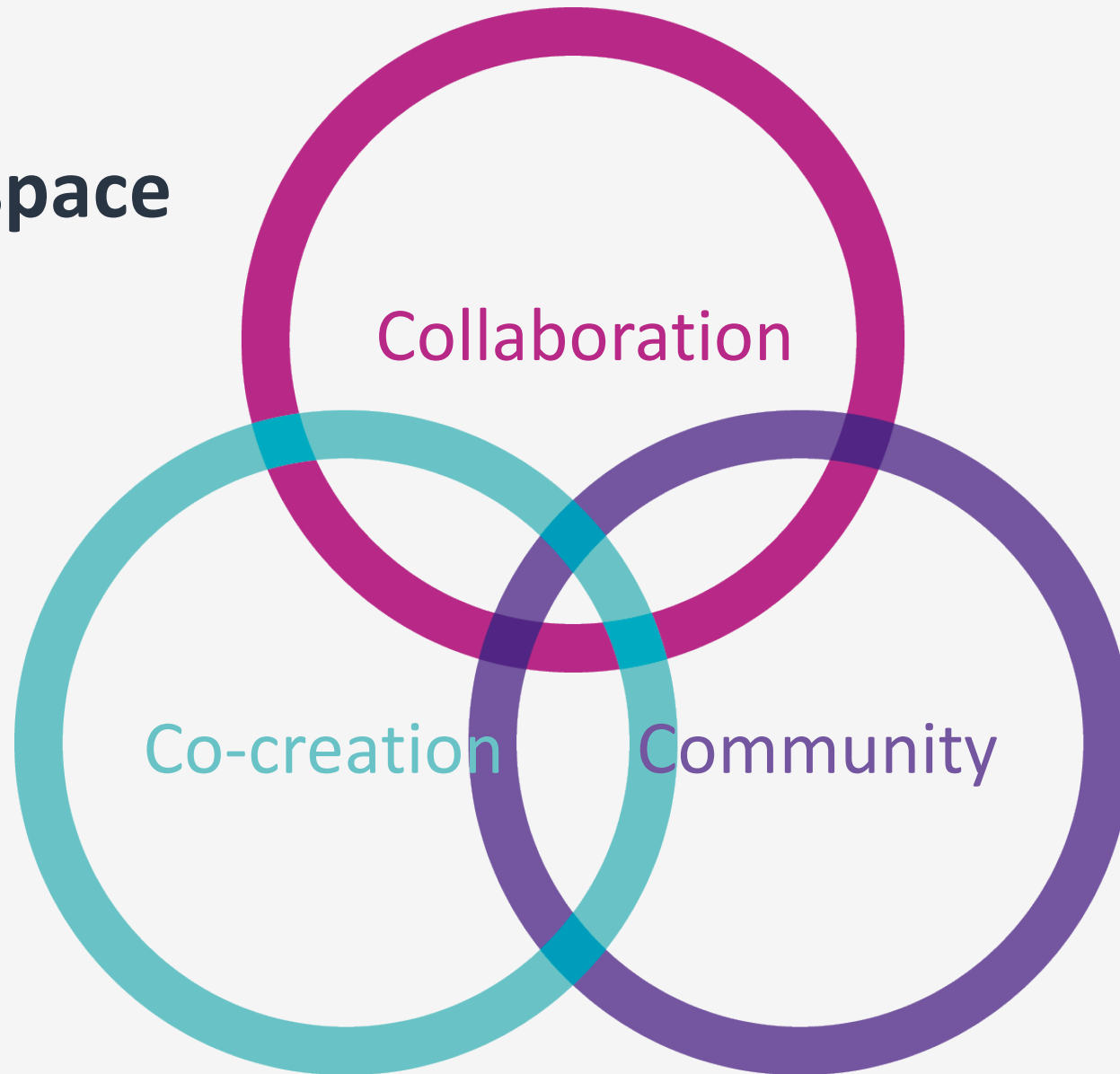
Resources



Change



Thriving in the third space



How we learned to stop worrying and thrive in the third space

Take action and
be useful



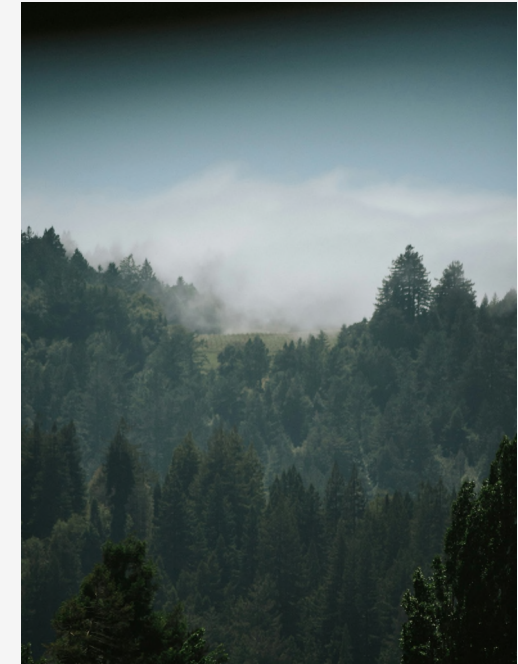
Be prepared to evolve
and let go



Look after and
strengthen your team



Lift your head
above the canopy

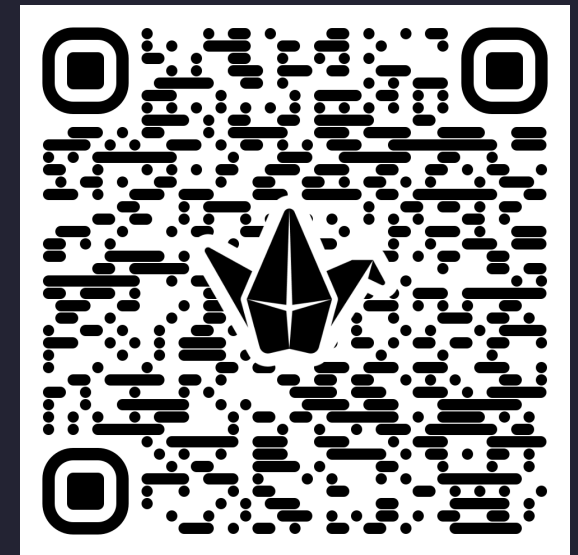


IMPERIAL

Centre for Academic English

Let's keep the conversation going

Please share your thoughts and experiences over lunch
or via our Padlet.



References

Denney, F. (2021) A glass classroom? The experiences and identities of third space women leading educational change in research-intensive universities in the UK. *Educational Management Administration and Leadership*. 51 (6), 1140–1460.

<https://doi.org/10.1177/17411432211042882>

Jenkins, H. (2004) The Cultural Logic of Media Convergence. *International Journal of Cultural Studies*. 7 (1), 33–43.

<https://doi.org/10.1177/1367877904040603>

McKay, F. & Robson, J. (2023) Structured agency, normalising power, and third space workers: higher education professional services staff as regulatory policy actors. *Journal of Further and Higher Education*. 47 (5): 633–646.

<https://doi.org/10.1080/0309877X.2023.2177526>

Smith, C., Holden, M., Yu, E., & Hanlon, P. (2021) ‘So what do you do?’: Third space professionals navigating a Canadian university context. *Journal of Higher Education Policy and Management*. 1–15.

<https://doi.org/10.1080/1360080X.2021.1884513>

Thorpe, C., & Partridge, H. (2024) The Third Space in Higher Education: A Scoping Review. *Higher Education Policy*. 1-20.

<https://doi.org/10.1057/s41307-024-00374-z>

Whitchurch, C. (2008) Shifting Identities and Blurring Boundaries: the Emergence of *Third Space* Professionals in UK Higher Education. *Higher Education Quarterly*. 62 (4), 377–396.

<https://doi.org/10.1111/j.1468-2273.2008.00387.x>